



Magnum Ventures Ltd.

HOTEL | PAPER

INVESTOR PRESENTATION – Q2 & H1FY25



Disclaimer

This document has been prepared for information purposes only and is not an offer or invitation or recommendation to buy or sell any securities of Magnum Ventures Ltd ("Magnum", "Company"), nor shall part, or all, of this document form the basis of, or be relied on in connection with, any contract or investment decision in relation to any securities of the Company. This document is strictly confidential and may not be copied, published, distributed or transmitted to any person, in whole or in part, by any medium or in any form for any purpose. The information in this document is being provided by the Company and is subject to change without notice. The Company relies on information obtained from sources believed to be reliable but does not guarantee its accuracy or completeness. This document contains statements about future events and expectations that are forward-looking statements. These statements typically contain words such as "expects" and "anticipates" and words of similar import. Any statement in this document that is not a statement of historical fact is a forward looking statement that involves known and unknown risks, uncertainties and other factors which may cause our actual results, performance or achievements to be materially different from any future results, performance or achievements expressed or implied by such forward-looking statements. None of the future projections, expectations, estimates or prospects in this document should be taken as forecasts or promises nor should they be taken as implying any indication, assurance or guarantee that the assumptions on which such future projections, expectations, estimates or prospects have been prepared are correct or exhaustive or, in the case of the assumptions, fully stated in the document. The Company assumes no obligations to update the forward-looking statements contained herein to reflect actual results, changes in assumptions or changes in factors affecting these statements. You acknowledge that you will be solely responsible for your own assessment of the market and the market position of the Company and that you will conduct your own analysis and be solely responsible for forming your own view of the potential future performance of the business of the Company.





Table of Content

01.

Performance
Highlights

02.

About
Us

03.

Business | Way
Overview | Forward

04.

Annual
Highlights

- **Hotel** Division
- **Paper** Division





PERFORMANCE HIGHLIGHTS

(Q2 & H1 FY25)





Quarterly Income Statement (Q2 & H1 FY25)

Particulars (INR Mn)	Q2FY25	Q1FY25	Q2FY24	YoY%	QoQ%	H1FY25	H1FY24
Net Sales	836.2	900.8	1,209.4	-30.9%	-7.2%	1,737.0	2,332.5
Other Income	3.1	5.6	5.1	-38.7%	-43.7%	8.7	18.4
Total Revenue from Operations	839.4	906.3	1,214.5	-30.9%	-7.4%	1,745.7	2,350.9
Total Expenditure	605.1	789.9	1,068.3	-43.4%	-23.4%	1,395.0	2,055.4
EBITDA	234.2	116.4	146.2	60.3%	101.2%	350.7	295.4
EBITDA Margin (%)	27.9%	12.8%	12.0%	+1,587bps	+117bps	20.1%	12.6%
Depreciation	115.7	109.6	111.3	4.0%	5.6%	225.3	216.7
Profit Before Interest & Tax	118.5	6.8	34.9	240.0%	1637.0%	125.4	78.7
Bank charges/Interest	79.9	80.7	7.3	995.3%	-1.0%	160.6	13.5
Profit Before Tax	38.6	-73.9	27.6	40.1%	-152.3%	-35.2	65.2
Tax	-49.0	56.5	-25.1	95.4%	-186.8%	7.4	-22.0
Adjusted Profit After Tax	87.7	-130.4	52.7	66.5%	-167.3%	-42.7	87.2
Adjusted PAT Margin (%)	10.4%	-14.4%	4.3%	+611bps	-173bps	-2.4%	3.7%
Reported Profit After Tax	87.7	-130.4	52.7	66.5%	-167.3%	-42.7	87.2
Reported PAT Margin (%)	10.4%	-14.4%	4.3%	+611bps	-173bps	-2.4%	3.7%
Adjusted Earnings Per Share (Rs)	1.3	-2.2	1.1	19.9%	-160.6%	-0.6	1.8
Reported Earnings Per Share (Rs)	1.4	-2.2	1.1	26.4%	-163.8%	-0.7	1.9



Quarterly Segmental Break-up

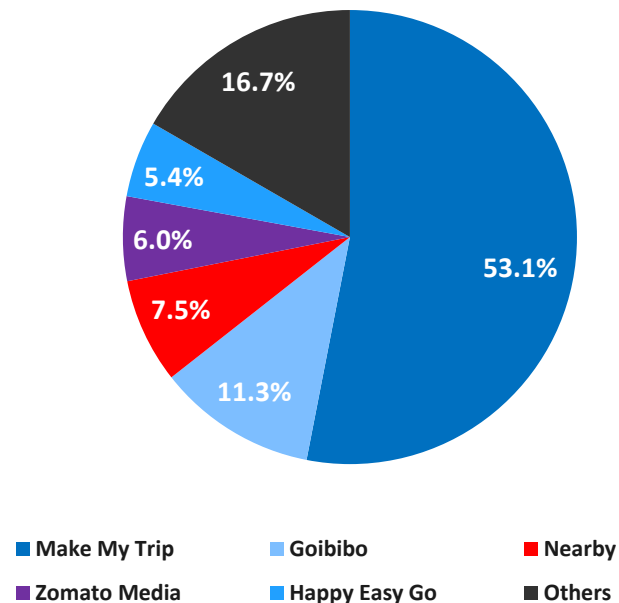
Particulars (INR Mn)	Q2FY25	Q1FY25	Q2FY24	YoY%	QoQ%	H1FY25	H1FY24	YoY%
Segment Revenue								
Paper	642.4	715.9	861.9	-25.5	-10.3	1,358.3	1,847.9	-26.5
Hotel	197.0	190.4	274.5	-28.2	3.5	387.4	503.0	-23.0
Total Revenue from Operations	839.4	906.3	1,136.4	-26.1	-7.4	1,745.7	2,350.9	-25.7
Segment Results								
Paper	161.9	-50.1	-46.4	-449.1	-423.2	111.8	-38.5	100.0
Hotel	5.7	0.4	90.2	-93.7	1,189.4	6.1	117.2	-94.8
Total	167.6	-49.6	43.8	282.5	-437.6	117.9	78.7	49.9
Less: Finance Cost	79.9	80.7	6.2	1,196.4	-1.0	160.6	13.5	1,093.3
PBT	87.7	-130.4	37.7	132.9	-167.3	-42.7	65.2	-165.4
Segment Assets								
Paper	7,952.9	7,645.3	7,079.2	12.3	4.0	7,952.9	7,105.0	11.9
Hotel	3,613.8	3,599.2	3,354.6	7.7	0.4	3,613.8	3,392.6	6.5
Total Assets	11,566.6	11,244.5	10,433.8	10.9	2.9	11,566.6	10,497.6	10.2
Segment Liabilities								
Paper	4,389.2	4,218.3	4,377.0	0.3	4.1	4,389.2	4,399.1	-0.2
Hotel	190.2	180.6	102.7	85.2	5.3	190.2	113.5	67.6
Total Segment Liability	4,579.3	4,398.9	4,479.7	2.2	4.1	4,579.3	4,512.6	1.5
Capital Employed (Segment Assets - Segment Liabilities)								
Paper	3,563.7	3,429.0	2,702.1	31.9	3.9	3,563.7	2,705.9	31.7
Hotel	3,423.6	3,418.6	3,251.9	5.3	0.1	3,423.6	3,278.9	4.4
Total Capital Employed	6,987.3	6,847.6	5,954.1	17.4	2.0	6,987.3	5,984.8	16.8



Performance Highlights - Hotel Division

Particulars (INR Mn)	Q2FY25	H1FY25
No. of Room Nights	19,872	39,528
Capacity Utilization	17,593	33,881
ARR	5,167	10,262
Rev par	4,574	8,824
F&B Revenue	65.4	119.8
Banqueting Revenue	38.9	91.4
Others	92.7	176.2
Total Revenue	197.0	387.4
Cost of F&B	40.1	78.1
Franchisee Fee	4.3	8.2
Manpower Expenses	51.5	103.1
Power & Fuel Expenses	17.7	33.0
Other Operating Expenses	37.8	88.7
Other Fixed Expenses	0.0	0.0
Hotel EBITDA	45.7	76.4

Revenue from Online Platforms (%)
Q2FY25



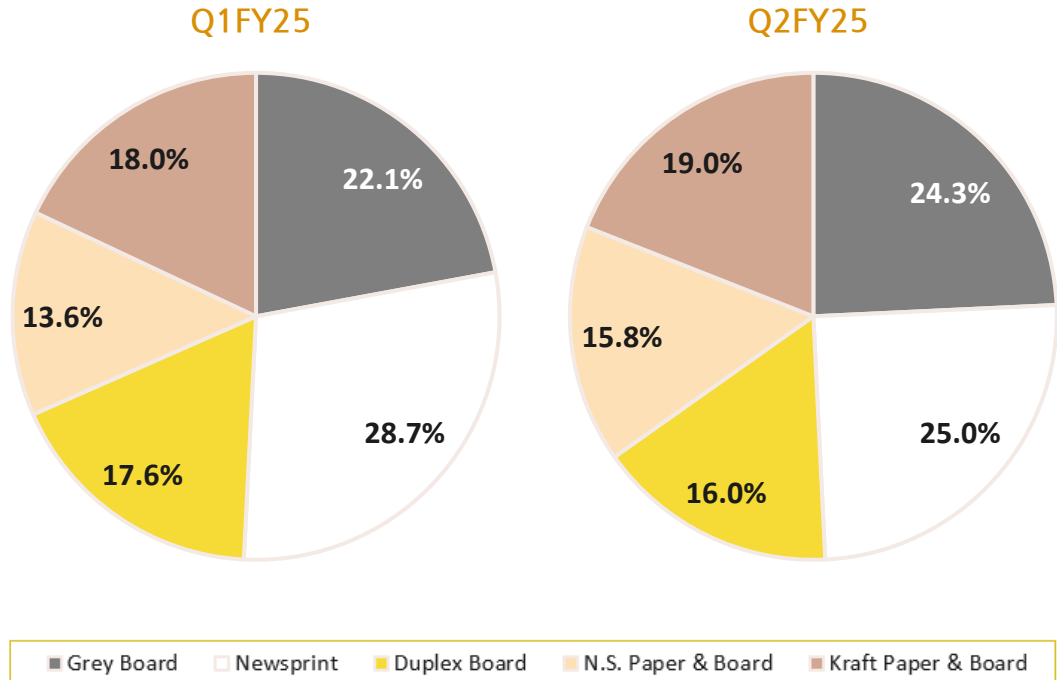


Quarterly Highlights - Paper Division

Particulars	Q2FY25
Production (MT)	20,765.7
Capacity Utilisation (%)	98%
Sale (MT)	14,545.8
Paper Revenue (Rs Mn)	626.1
ASP (per MT)	43,042.8

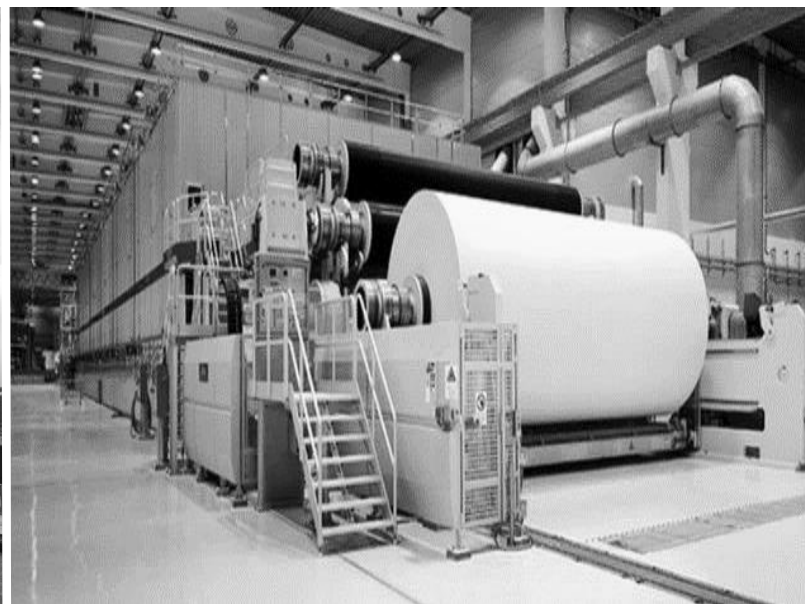
Export Earnings (INR Mn)	
Q1FY25	Q2FY25
9.47	3.64
1.3% (of total Revenue)	0.6% (of total Revenue)

Product Mix





ABOUT US





About Us



Incorporation
1980



Listing
2007

Magnum currently operates in **Paper Industry and Hotel Industry**. The Company is **Manufacturing papers** since **more than 30 Years**. The Company is one of the **largest paper** (Newsprint, Duplex Board, etc.) **printing concern in the Northern region**.

Revenue Break-Up (Q2'FY25)

Hotel Division **23.5%**

Paper Division **76.5%**



Location
**Sahibabad,
Uttar Pradesh**



Paper Units
**5,00,000
Sq. Ft.**



Paper Capacity
**85K MT
Per annum**



Hotel
**Country Inn &
Suites, by Radisson**
216 suites + 9 Banquets



Lead Management



Mr. Praveen Jain
Chairman & Promoter Director

He has an experience of 37+ years in the Paper industry.

He is primarily involved in strategic decision-making.

He has been instrumental in development of the Hotel project in the Company and structuring technological upgradation & modernization program undertaken in the Paper Units.

He has hands-on experience in the areas of finance department. He is looking after the finance & accounts function of the company, besides company secretarial function.



Mr. Pradeep Kumar Jain
Managing Director

Associated with the Company as Director since its takeover in 1984.

Managing Director from February 4, 2006.

Besides assuming overall responsibility of the company, he is looking after the production function of the paper division of the Company.

He has 42+ years of experience in the Paper Industry.

He is responsible for production, marketing & administration of the Paper Unit of the Company. He is also responsible for the administration of the Hotel Unit of the Company.



Mr. Abhay Jain
Managing Director

Whole-Time Director of the Company from December 10, 2009.

Managing Director on August 10, 2022.

Experience of 29+ in the Paper Industry.

He is handling the purchase of Raw Materials and looking after the Marketing and manufacturing process of Paper and also new product development.

Besides Mr. Jain is also involved in the marketing and business development of the Hotel Business of the Company.



Core Team



Mr. Parv Jain Chief Financial Officer (CFO)

He joined the company and was overseeing the operations of hotel/paper unit along with handling the CFO role.

Based on his working experience and knowledge, he was appointed as CFO of the company from September 2016 and is working in this capacity until date.

Ms. Aaina Gupta Company Secretary (CS)

An associate member of The Institute of Company Secretaries of India.

Has a post qualification experience of 8+ years in finance, legal & secretarial.

She was appointed as Company Secretary from 1st December, 2021.





O U R T E A M





Our Journey (1/2)

·1·

·1980·

Magnum Ventures Ltd.
formerly known as
Magnum Papers Private Ltd.
was incorporated.

·2·

·1984·

Taken over under the
leadership of
Late. Shri Salek Chand Jain
along with his Sons Mr.
Vinod Jain, Mr. Parmod
Kumar Jain, Mr. Pradeep
Kumar Jain & Mr. Praveen
Jain.

·3·

·2007·

Ventured into hospitality
business with the
opportunity of doing good
business due to the
Commonwealth Games held
in Delhi NCR in 2010.
Formed partnership with
Radisson Hotel Group.





Our Journey (2/2)

·4·

·2009·

COUNTRY INN & SUITES
By Radisson
A 5 Star Hotel was soft
launched in
January, 2009.

·5·

·2020-21·

Maintenance work in the
factory as well as hotel.
Installed FGD equipment in
thermal power plant and are
therefore treated at par with
the other thermal power
plants.

·6·

·2022-24·

Installed solar energy panels
and got government
approval for use of bio diesel
for the paper mill.





BUSINESS OVERVIEW





Business Operations



HOTEL DIVISION

Country Inn & Suites, by Radisson

Sahibabad, District Ghaziabad, Uttar Pradesh

Operational Since: February, 2009 | 5 ★ Vegetarian Hotel

9	216	52 Seater	60,000+ Sq. Ft.
Banquet Halls	Luxurious Rooms	Home Theatre	of Meeting Space

Recreational amenities: Health Club, Swimming Pool, Bar & Saloon.

The hotel has a **USP** of being the **1st all-Vegetarian Hotel** to have been formally certified as a **5 star hotel** by (HRACC) **Ministry of Tourism**.



PAPER DIVISION

Manufacturing Facility

Sahibabad, District Ghaziabad, Uttar Pradesh

30+ years of experience in the paper manufacturing business.

Consolidated Size of All Units

5,00,000 Sq. Ft.

Capacity

85K MT Per annum

Product Line:

- Grey Board
- Newsprint
- Duplex Board
- N.S. Paper & Board
- Kraft Paper & Board

The Company is one of the largest paper printing concern in the Northern region. The company has been engaged in the **manufacture of paper from 100% wastepaper**.



Hotel Division

Country Inn & Suites, by Radisson

Sahibabad, District Ghaziabad, Uttar Pradesh

5 ★ Hotel

216 Rooms

9 Banquets

52 Seater Home - Theatre
(Affiliation with PVR)





What Sets Us Apart?

HOTEL DIVISION

Reputed Brand Name

- Radisson is an international hotel company that operates **multiple hotels worldwide**.
- Radisson Hotel Group is **one of the largest hotel groups** in the world in terms of rooms and Hotels.
- **Radisson Hotel is ranked 34th globally, amongst the Travel & Hospitality Brands.**

Customer Relationship

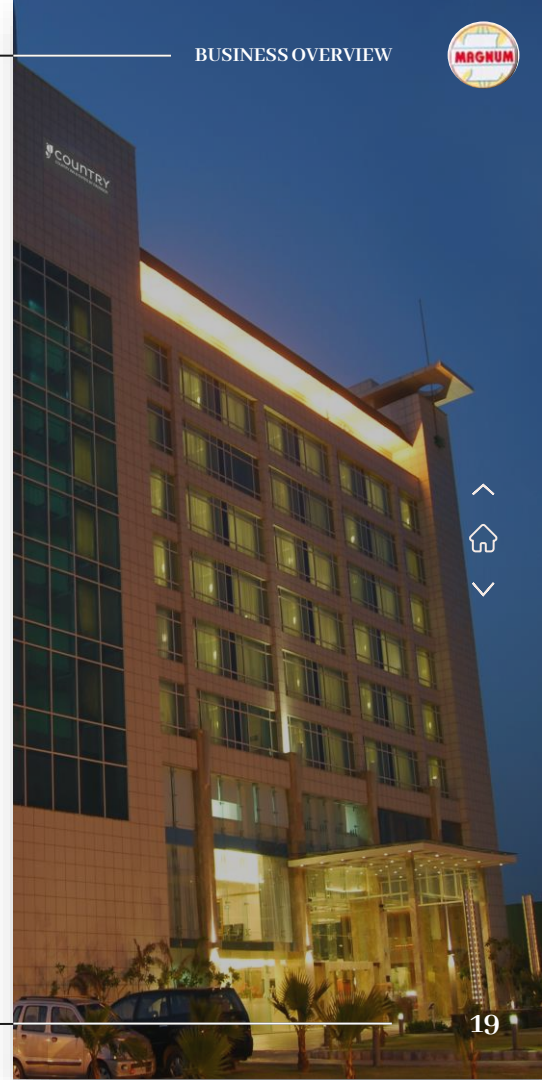
- By the virtue of offering only vegetarian cuisine, its hotel has established customer trust related to utensil, integrity and non-cross over of resources from non-vegetarian to vegetarian counters.

5 Star Property

- **1st all-Vegetarian Hotel** to have been formally certified as a **5 star hotel** by (HRACC) Ministry of Tourism.
- The Hotel is attractively placed to **address the needs of the Vegetarian & Vegan customers.**

Location

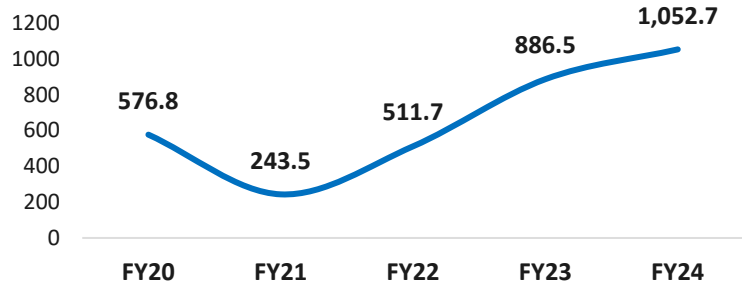
- 50 minutes from the International Airport,
- 10 minutes from the Akshardham Temple
- Just a 25 minutes' drive from the Hotel to India Gate and Connaught Place.
- Strategically located close to the Delhi – Meerut Expressway



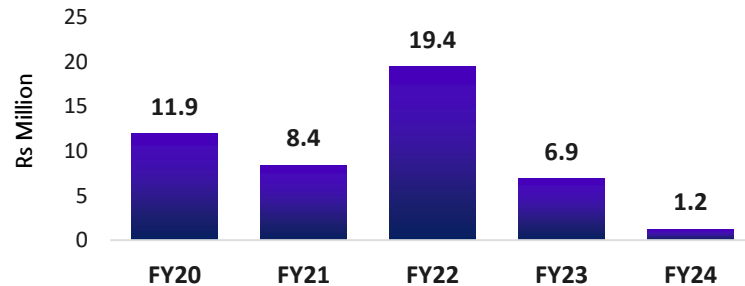


Business Overview

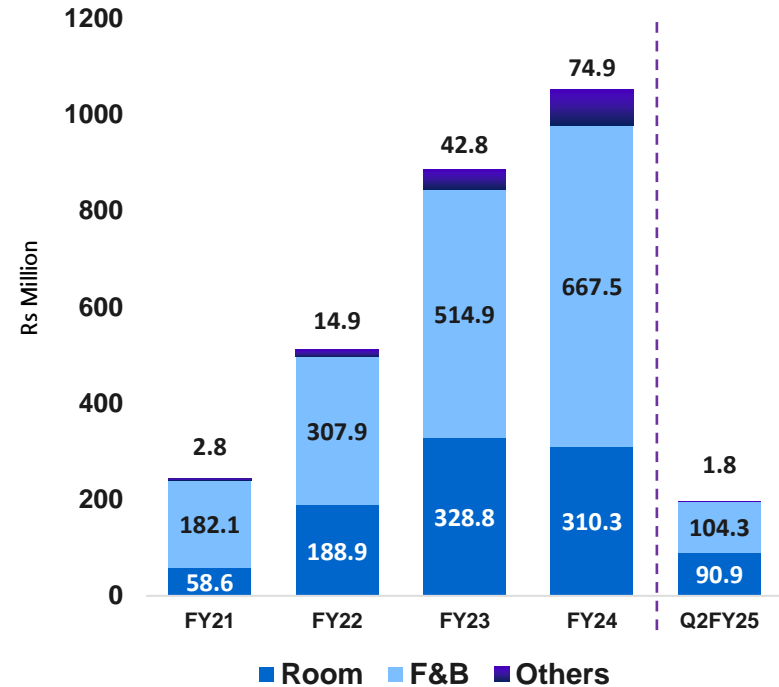
Total Revenue (INR Million)



Foreign Currency Revenue (INR Million)

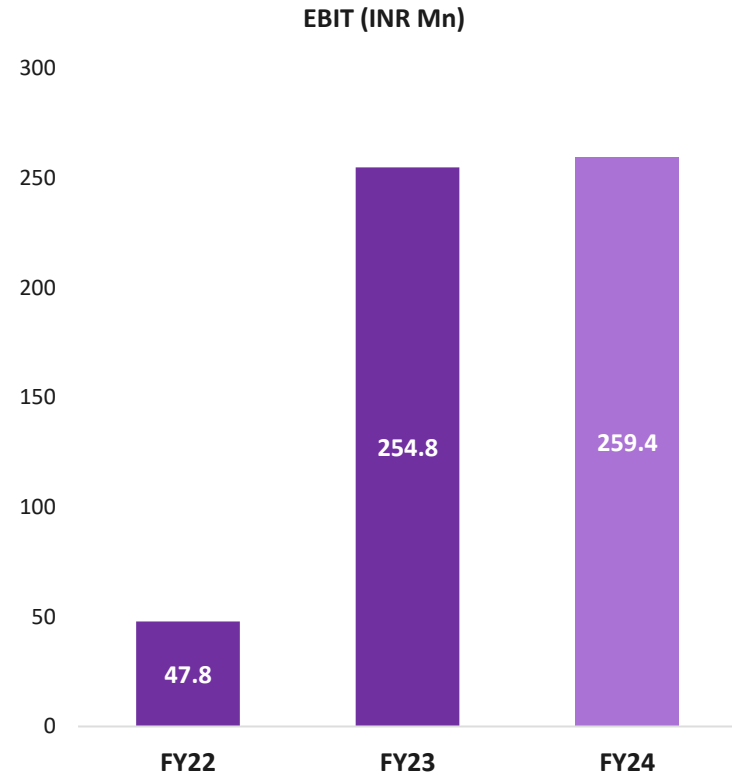
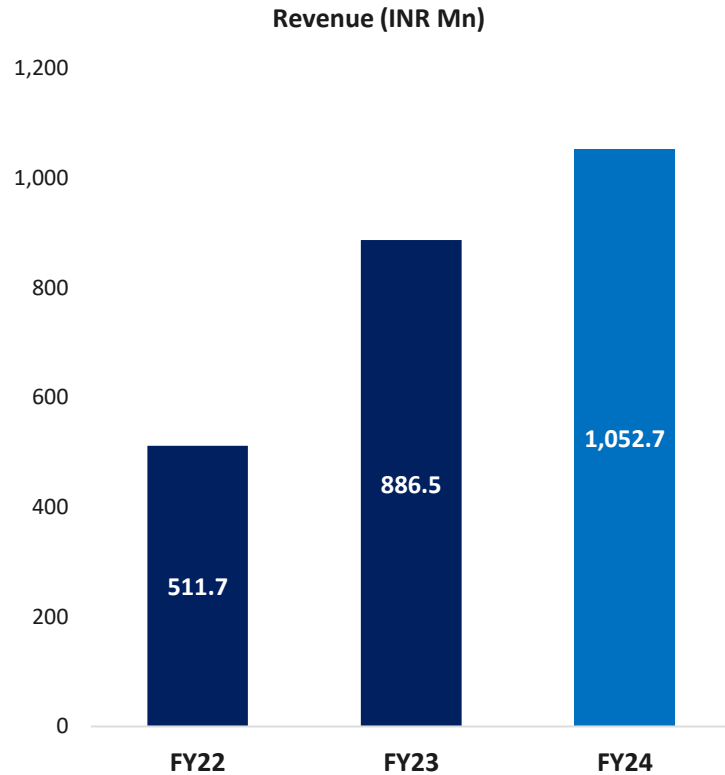


Revenue Break-up (INR Million)





Business Overview

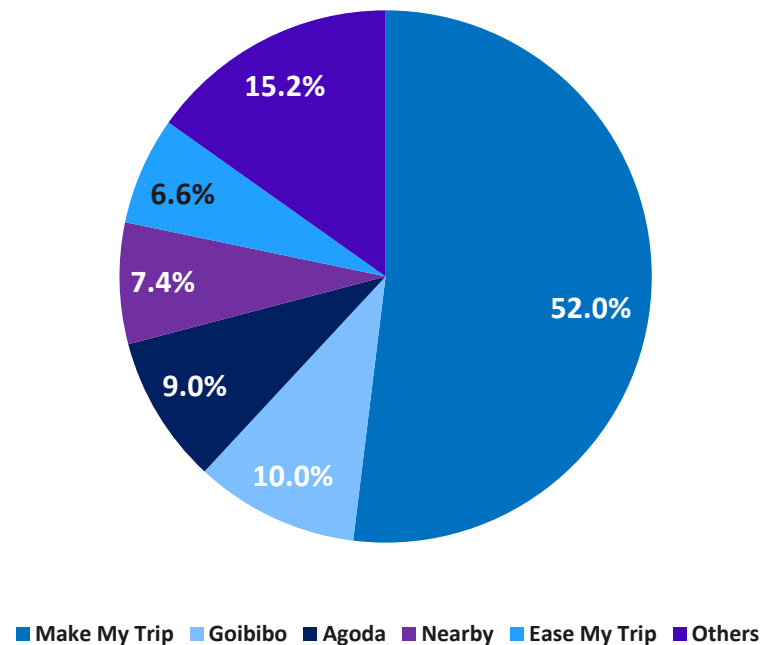




Business Analysis

FY	Room keys/ Room Nights (p.a.)	Occupancy Rate (%)	ARR (Rs)	RevPar (Rs)
2020	216 (78,840)	82	4,191	3,455
2021	216 (78,840)	54	5,271	1,491
2022	216 (78,840)	71	3,393	2,397
2023	216 (78,840)	90	4,610	4,170
FY24	216 (78,840)	83	4,742	3,925
Q1FY25	216 (19,656)	83	5,095	4,250
Q2FY25	216 (19,872)	88	5,167	4,574

Revenue from Online Platforms [FY24] (%)





SWOT Analysis

Strength

- Personalized experiences for guests
- Multiple Cuisines & Award winning Chefs
 - Best occupancy rates in the area
- Strong banqueting led by 9 banquets
- Parking for 700+ cars in own hotel + leased adjoining land to support banqueting experience
- High occupancy rates even during the week



Weakness

- Higher tax structure and approvals for the industry
- High cost of real estate is a deterrent to setting up own hotels
- Brand used is on “Royalty” from Radisson and not owned by the company.



Threat

- High Employee Turnover
- Pandemic-induced situations / Global travel uncertainties
- Any new hotel coming up in the near future in adjoining region

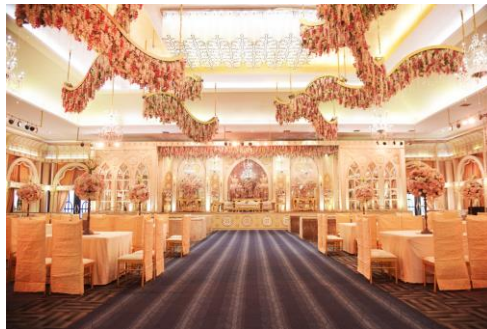


Opportunity

- Targeting the most profitable customer segment - business travelers
- Less price sensitive consumer base
- Extensive under-supply in hotel rooms in the region
- Widening connectivity - road, air and rail



Country Inn & Suites, By Radisson





Why Radisson?



95+ Countries
Global Presence

1,160 + Hotels
In EMEA & APAC

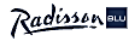
2,04,000 +
Rooms

10+ Distinctive Brands
Global Reach

- Since 2018, Radisson Hotel Group is part of Jin Jiang International
- **It is one of the Top 2 largest hotel groups in the world by number of rooms and hotels.**
- It is recognized as **4th Best Employer in the Travel & Leisure industry by Forbes.**
- Radisson Hotel Group cemented its position in EMEA as one of the leading international hotel groups by **ranking 3rd in total number of signed rooms in H1 FY22.**
- **In India, Radisson Hotel Group is one of the largest international hotel groups with more than 100 hotels in operation and under development and aims to double its portfolio by 2050.**



Source: <https://www.radissonhotels.com/en-us/corporate/about-us/our-presence> | <https://www.hospitalitynet.org/news/4113087.html>





Hotel Industry - India

70-72%

Occupancy Rate –
2024

7-9%

Indian hotel Industry Est
revenue growth - 2025

7.1% per annum

CAGR of Travel & Tourism
Industry

USD 199 Billion

Industry contribution to the
GDP - 2023

Rs. 8,055

ARR -
FY24

86% Domestic Spending

Contribution to India's direct
Travel & Tourism GDP - 2023

5.9% per annum

Travel & Tourism Industry
contribution to GDP - FY23

USD 512 Billion

Industry contribution to the GDP
Est - 2028



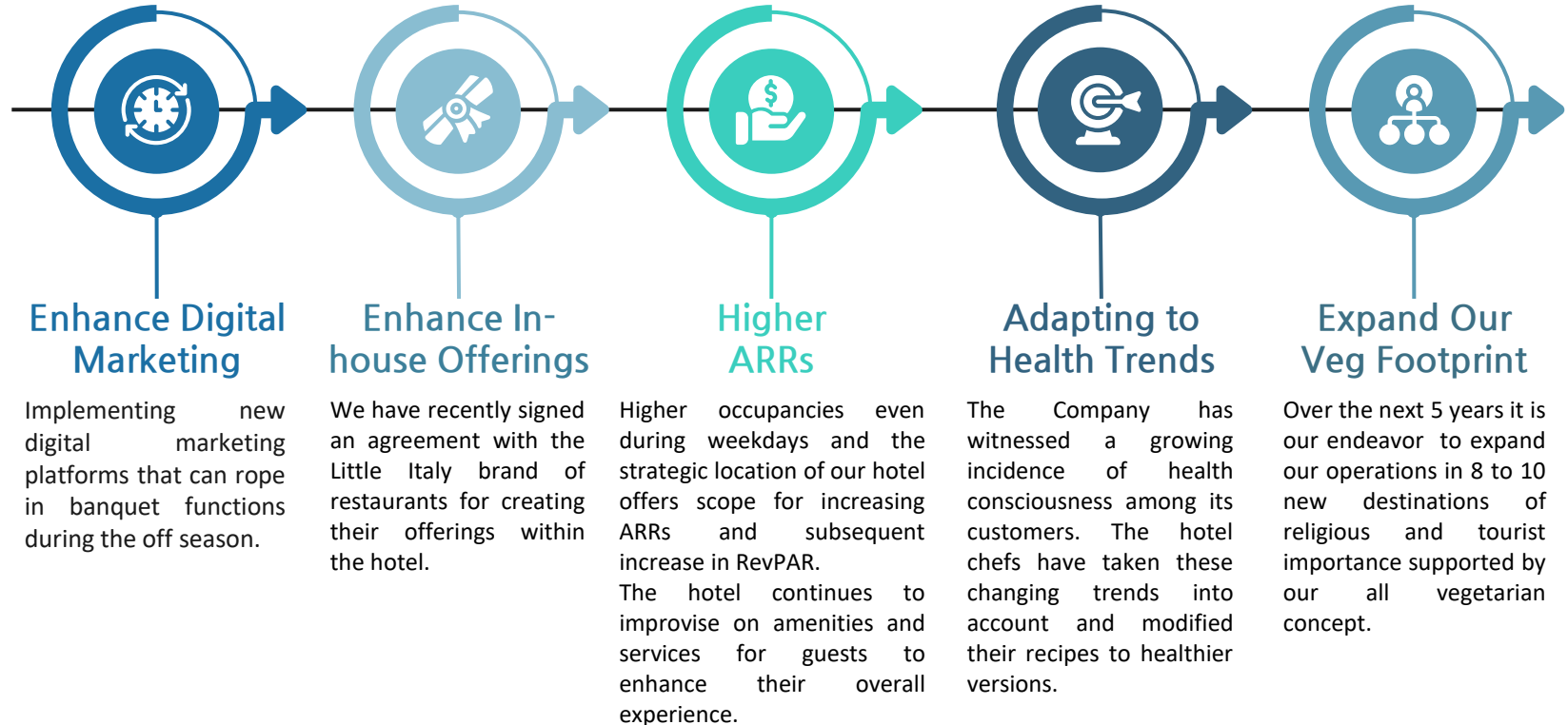
According to the World Economic Forum's Travel and Tourism Index, India remains the leading country in South Asia and holds the 54th position globally

- The enunciation of long-term policies by the Indian government has inspired unprecedented foreign direct investment and industrial growth.
- The announcement of production-linked incentives has catalyzed the growth of a number of downstream sectors.
- 48 lakh + couples were to tie the knot in the first half of 2024 (estimate by the Confederation of All India Traders), leading to boost in the Banquet Business.

Source: <https://www.ibef.org/industry/tourism-hospitality-india>, <https://hotelivate.com/wp-content/uploads/2024/10/i2024.pdf>



Way Forward - Hotel Division





Paper Division



What Sets Us Apart?

PAPER DIVISION

Business Associations

- Close proximity to raw material sources (scrap Paper)
- Strong and long term vendor relationships (local & global) help the Company ensure steady availability of high quality raw material.

Competitive Rates Globally

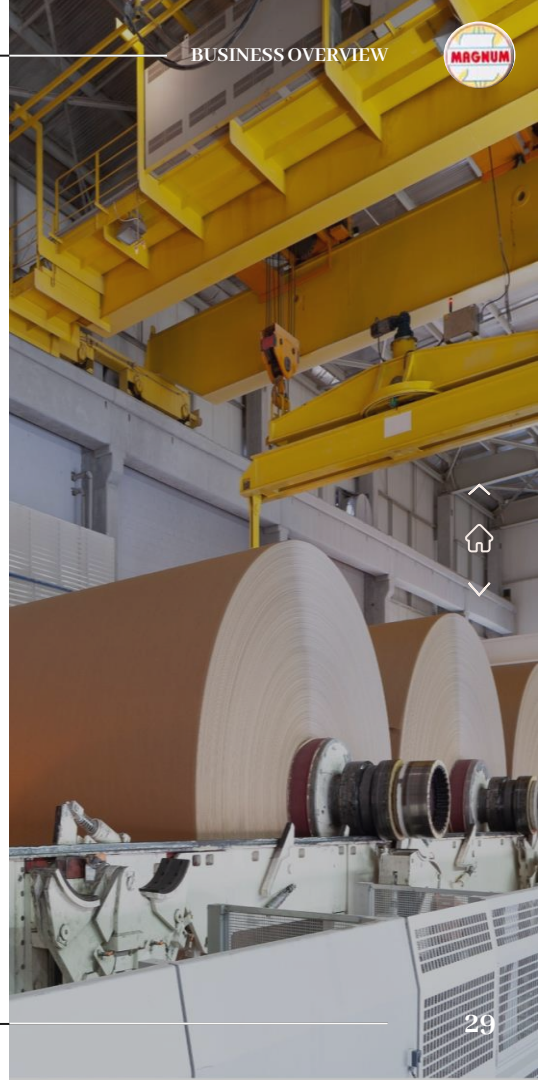
- Leveraging economies of scale, cutting-edge technology, and strategic partnerships with all stakeholders, gives the Company the competitive advantage to offer competitive rates globally.

100% inhouse Thermal Power

- 6 MW Thermal Power Plant for in-house consumption
- Only company in the region allowed to use thermal power generation
- Installed FGD equipment and are therefore treated at par with the other thermal power plants

Compliant to Environment Norms

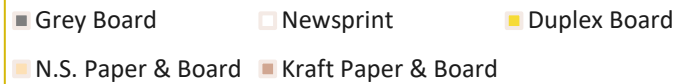
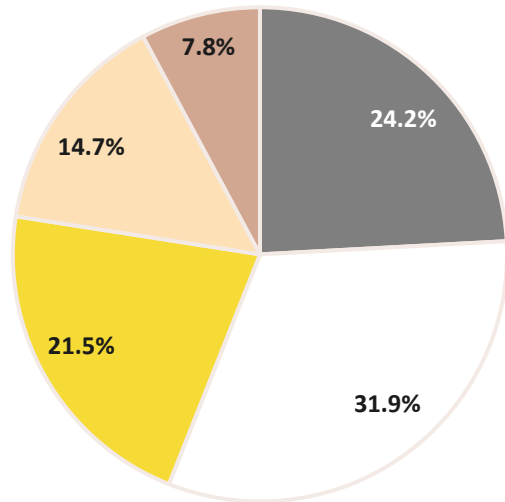
- Installed solar energy panels and use bio diesel as permitted by the government.
- Complete system of recycling of water in place as per the norms.
- Abiding by the stringent standards of pollution control laid down by the Central Pollution Control Board and CAQM.



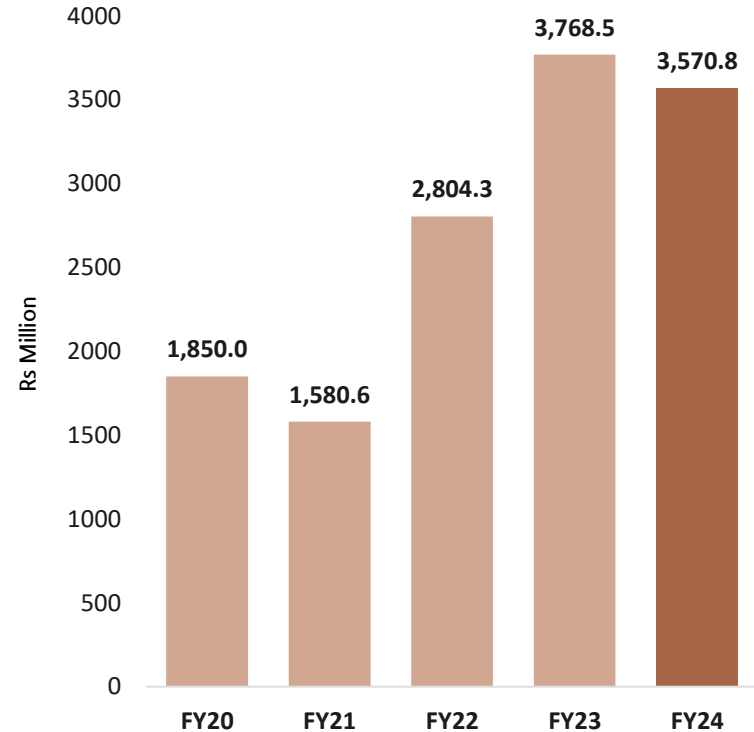


Business Overview

Product Mix - FY24



Total Revenue (INR Million)

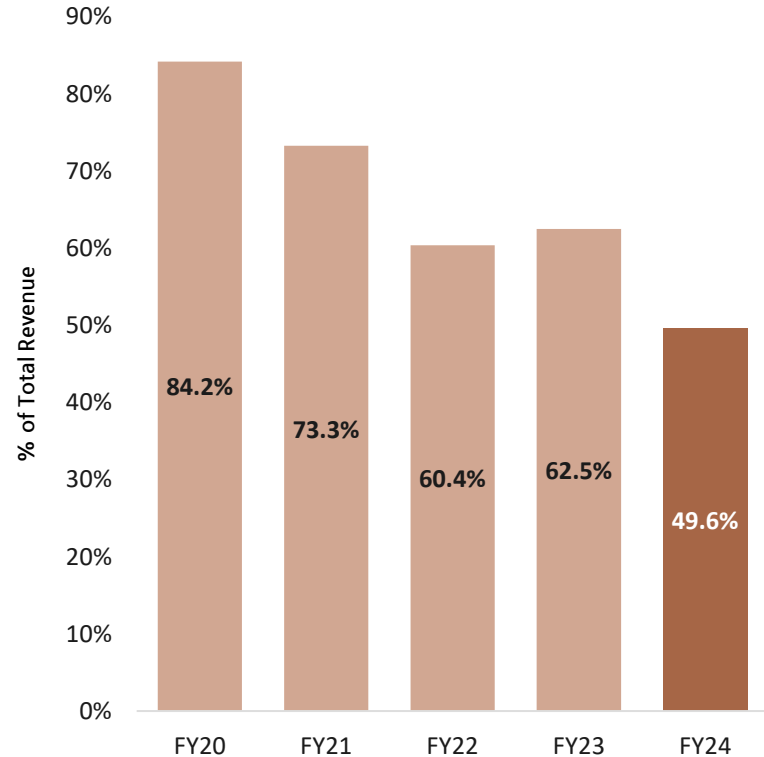




Clientele



Top 10 Customer Contribution (%)





Business Features

Quality Assurance

- The R & D lab is fully equipped with the latest testing machines and round the clock checking of the product.
- Detailed analysis of process materials, intermediate product, water are carried out in the central laboratory.
- Customers' service, complaints, product development apart from normal work of inspection, testing and monitoring is carried out by the quality control laboratory.

Research Centre

The company has set up a separate Research & Development Department with a modern research center at Sahibabad to carry out the research on:

- Suitability of pulping
- Improving process efficiency
- Developing / optimization of processes for improving productivity and energy conservation
- Substituting import.

Industrial Safety

- The company has facilities for industrial safety, which are more than required by the law.
- The safety department has qualified and trained people and is fully equipped with safety equipment.
- The company is meeting the standards laid down by pollution control board for air & water and also making conscious efforts to reduce water consumption. The consents granted by pollution control board are valid.





Focus on the Environment

Magnum Ventures has been a wastepaper-based paper manufacturer for 30+ years. Over the years the company has elected to **manufacture 100% of its' produce with waste paper acquired from local & global sources.**

The company manufactures **paper using waste (scrap paper)**, transforming into an economic resource.

Complete system of **recycling of water** as per the norms.

Pollution Control Equipment

as per the international standards suggested by the governing bodies.

Flue Gas Desulphurization (FGD) Equipment

Installed in the thermal power plant to ensure emission within permissible standards laid down by Central Pollution Control Board, Uttar Pradesh Pollution Control Board and Commission for Air Quality Management.

LED Lights with Sensors

Reduced consumption of resources in order to save energy

Solar Energy Systems

Installed throughout the plant and planting trees in the surrounding areas in order to increase green cover.





SWOT Analysis

Strength

- Environmentally Responsible & Sustainable
- Invested in cutting-edge equipment & infrastructure
 - Long-term relationships and credible reputation amongst trade partners (domestic & global)
- Does not manufacture writing & printing paper that has faced extensive market erosion on account of digitalization and paperless processes.



Weakness

- Demand Compression
- Cheap Imports
- Increased competition from the digital media especially for newsprint
- Competition from unorganized players



Threat

- Quality and cost of raw materials procurement
 - Predominance of small unorganized players
 - Capital-intensive industry
 - High cost of technology
 - High power consuming industry



Opportunity

- New Value added products to improve profitability
- Identifying Breakthrough technologies
- Relaxed rules & regulations by Govt. of India



Paper Mill





Paper Industry - India

6-7%

Increasing Demand per annum - India

16 Million

Tonnes per annum - 2023

5% share

India's share on a Global Level

57 Kgs per annum

Per capita consumption - Global Average

526+

Operational Paper Mills

24 Million

Tonnes per annum - 2025-26E

16 Kgs per annum

Per capita consumption - India

200 Kgs per annum

Per capita consumption - Developed Countries

India ranks 15th among paper manufacturing nations in the world.

- Paper manufacturing scenario in India is witnessing a significant shift towards sustainability with large paper mills working to improve efficiencies, increase productivity, and reduce resource intensity.
- The industry has been working on new practices including research and development towards energy efficiency, environment preservation, and better overall process technology.

Source: <https://www.business-standard.com/industry/news> | <https://www.maximizemarketresearch.com/market-report/indian-paper-pulp-market/29044/> | <https://prepp.in/news/e-492-paper-industry>





Way Forward - Paper Division





ANNUAL HIGHLIGHTS





Annual Income Statement

Particulars (INR Mn)	FY20	FY21	FY22	FY23	FY24
Revenue from Operations	2,410.6	1,766.0	3,283.0	4,600.1	4,608.4
Other Income	15.7	58.1	33.0	54.8	15.1
Net Income from Operations	2,426.3	1,824.1	3,316.0	4,654.9	4,623.5
Total Expenditure	2,356.4	1,639.0	3,062.4	4,180.7	4,081.7
EBITDA	69.9	185.1	253.6	474.3	541.8
EBITDA Margin (%)	2.9%	10.1%	7.6%	10.2%	11.7%
Depreciation	155.3	166.9	150.8	167.5	443.9
Profit Before Interest & Tax	-85.4	18.2	102.8	306.8	97.9
Bank Charges/Interest	11.6	16.2	24.1	40.0	49.8
Profit Before Tax	-97.0	2.0	78.7	266.8	48.1
Tax	171.6	(11.4)	(4.7)	(15.1)	(140.2)
Adjusted Profit After Tax	(268.7)	13.4	83.4	281.9	188.3
Adjusted PAT Margin (%)	-11.1%	0.7%	2.5%	6.1%	4.1%
*Exceptional Items	5.5	-	32.0	*(426.7)	*(58.7)
Reported Profit After Tax	(274.1)	13.4	51.4	708.6	247.0
Reported PAT Margin (%)	-11.3%	0.7%	1.5%	15.2%	5.3%
#Other Comprehensive Income	1.0	2.7	4.1	#5,468.7	3.0
Total Comprehensive Income	(273.1)	16.1	55.5	6,177.3	250.0
Reported Earnings Per Share (Rs)	(7.26)	0.43	1.37	18.78	5.04

***Exceptional Items** includes Profit/(Loss) on sale of asset & Gain Arising from restructuring of AARC Loan.

#**Comprehensive Income** revaluation of Property, Plant & Equipment by adopting revaluation model. ([BSE Link](#))



Annual Balance Sheet

Particulars (INR Mn)	FY23	FY24	H1FY25
Equity & Liabilities			
Equity			
Share Capital	421.0	588.9	664.1
Other Equity	5,418.4	6,220.6	6323.2
Total Equity	5,839.4	6,809.5	6987.3
Liabilities			
Non-Current Liabilities			
Financial Liabilities			
i) Borrowings	997.7	1,490.6	1378.4
ii) Lease Liabilities	186.6	375.5	356.1
Provisions	56.3	60.5	61.8
Deffered Tax Liabilities	2,012.4	1,870.8	1878.2
Total Non-Current Liabilities	3,253.1	3,797.3	3674.5
Current Liabilities			
Financial Liabilities			
i) Borrowings	663.5	85.0	136.0
ii) Lease Liabilities	35.5	35.0	37.7
iii) Trade Payables	320.4	387.9	365.2
iv) Other Financial Liability	216.8	125.4	73.5
Other Current Liabilities	78.2	88.8	261.6
Provisions	20.4	25.6	30.7
Total Current Liabilities	1,334.8	747.7	904.8
Total Equity & Liabilities	10,427.2	11,354.4	11566.6

Particulars (INR Mn)	FY23	FY24	H1FY25
Assets			
Non-Current Assets			
Property Plant & Equipment	9,102.2	8,901.5	9261.1
Capital work in Progress	-	142.5	144.9
Intangible Assets	0.8	0.6	0.6
Right of Use Asset	198.2	371.3	345.9
Financial Asset			
i) Other Financial Asset	17.9	60.1	60.8
Total Non-Current Assets	9,319.1	9,476.0	9813.4
Current Assets			
Inventories	568.5	418.8	610.2
Financial Assets			
i) Trade Receivables	399.0	649.1	475.7
ii) Cash & Cash Equivalent	21.5	200.1	106.5
iii) Other Cash Balance	22.1	274.6	37.6
iv) Loans	1.6	1.9	2.5
v) Other Financial Assets	0.9	2.1	1.3
Other Current Assets	94.5	331.9	519.3
Total Current Assets	1,108.1	1878.5	1753.3
Total Assets	10,427.2	11,354.4	11566.6



THANKS!

Magnum Ventures Ltd.

Aaina Gupta - Company Secretary

Email: investor@magnumventures.in

www.magnumventures.in



KAPTIFY® CONSULTING

Strategy & Investor Relations | Consulting

Tel: +91-845 288 6099 | Email: info@kaptify.in

www.kaptify.in